

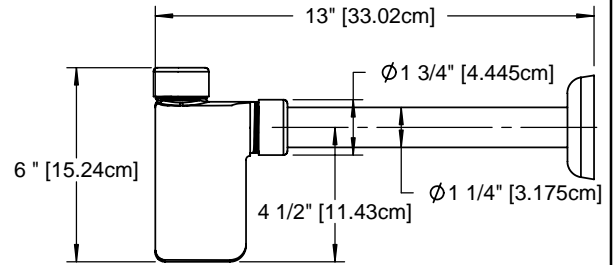


Product Description - Roughing-in Dimensions



Decorative Bottle Trap

- Parts and Accessories
- 1 1/4" (3.175cm) Internal Diameter
- Replaces Standard P-Trap
- Measurement: 3 1/4" x 13" x 6"
(8.266cm x 33.05cm x 15.24cm)
- CSA Certified: CSA B125-01,
ASME A112.18.2 - 2002



SIDE VIEW

Installation Notes

- Install Lavatory and Drain according to manufacturer's provided installation instructions.
- Remove both **Slip Joint Nuts** and **Black Washers** from **Trap System**.
- Apply Teflon to two sets of exposed male threadings of **Trap System**.
- Insert **Horizontal Leg** into existing wall waste hole.
- Place one set of **Slip Joint Nut** and **Black Washer** onto **Horizontal Leg**.
- Place one set of **Slip Joint Nut** and **Black Washer** onto Tailpiece.
- In an upward motion, align **Trap System** with **Horizontal Leg** and Tailpiece.
- Insert **Horizontal Leg** and Tailpiece into **Trap System**.
- Thread both **Slip Joint Nuts** onto **Trap System**.
- Check for leakage.

