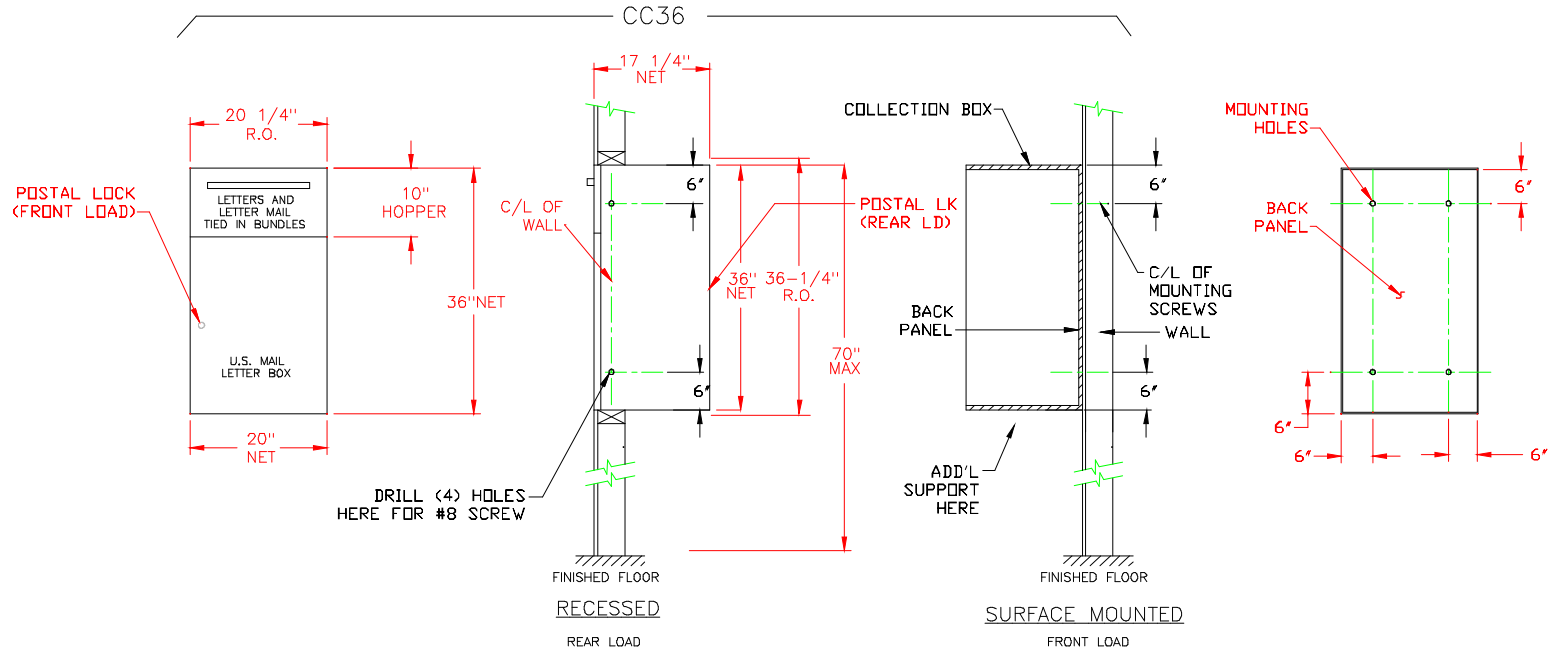


CC36/CC60 COLLECTION BUNDLE BOX INSTALLATION CUT SHEET



INSTALLATION NOTES, RECESS MOUNT

1. CUT WALL OPENING AT DESIRED LOCATION TO ROUGH OPENING DIMENSIONS AS SHOWN.
2. DRILL HOLES IN TOP & BOTTOM OF COLLECTION BOX SIDE PANELS (REFER TO ILLUSTRATIONS)
3. INSERT COLLECTION BOX INTO OPENING. WHEN BOX IS PROPERLY LOCATED, MARK LOCATION OF HOLES IN BOX SIDE PANELS ONTO WALL, REMOVE BOX AND DRILL PILOT HOLES INTO MARKS. RE-INSERT BOX INTO WALL OPENING.
4. IF NECESSARY, INSERT ANCHORS BEFORE RE-INSERTING BOX.
5. MOUNT COLLECTION BOX TO WALL OPENING USING #8 SCREWS.

INSTALLATION NOTES, SURFACE MOUNT

1. IF BOX IS LOCATED OFF THE FLOOR, SUPPORTING THE BOX FROM UNDERNEATH IS HIGHLY RECOMMENDED.
2. DRILL HOLES IN BACK PANEL FOR (4) 1/4" SCREWS FOR (CC36) & (6) 1/4" SCREWS (FOR CC60) PER ILLUSTRATION.
3. POSITION BOX AGAINST WALL, MARKING HOLE LOCATIONS ON WALL, THRU HOLES IN BACK PANEL. DRILL PILOT HOLES INTO MARKS
4. ANCHORS MAY BE NECESSARY, INSERT THEM NOW. RE-INSERTING BOX.
5. MOUNT COLLECTION BOX TO WALL USING 1/4" SCREWS.