

*Installation Instructions / Warranty*

**hansgrohe**



*Four-Hole Roman Tub Trims*

**retroaktiv**  
hansgrohe

**interaktiv**  
hansgrohe

90506801 4/2004

## 4-Hole Roman Tub Trim

### Interaktiv

1901 06647XX0	Solaris 06665XX0	Monsoon 06666XX0
Stratos 06667XX0	Metro 06669000	S 06876000

### Retroaktiv

Cross handle 06125XX0	Swing 06125XX0	Tango 06048XX0	Limbo 06113XX0
Scroll handle 06124XX0	06124XX0	06047XX0	06112XX0
Lever handle 06123XX0	06123XX0	06046XX0	06110XX0

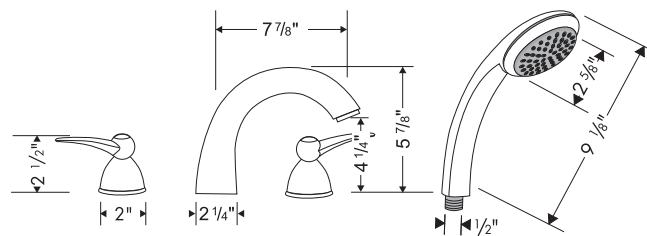
## Installation Considerations

For best results, Hansgrohe recommends that this unit be installed by a licensed, professional plumber.

4-hole roman tub rough 06646000 must be installed, and the mounting surface completed before installation of this trim kit.

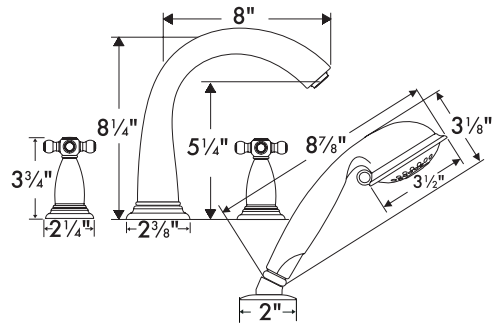
Flow rate of handshower 2.5 gpm

### Interaktiv

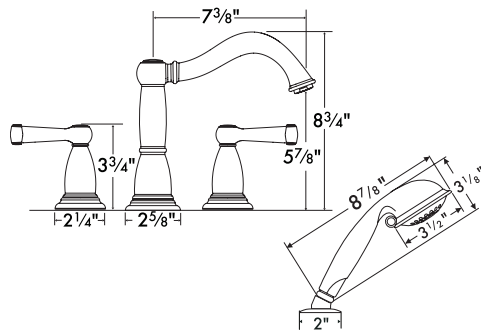


Interaktiv - Metro handles shown

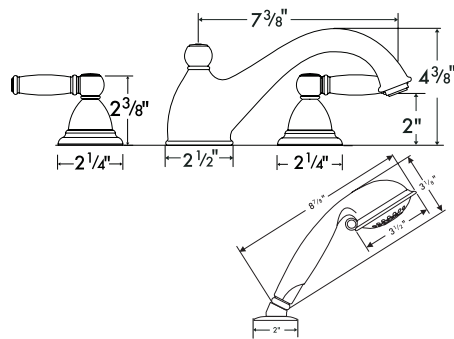
*Retroaktiv*



Swing - Cross handles shown



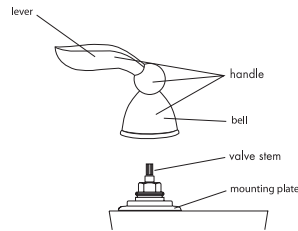
Tango - Swing handles shown



Limbo - Lever handles shown

### *Install the Handles*

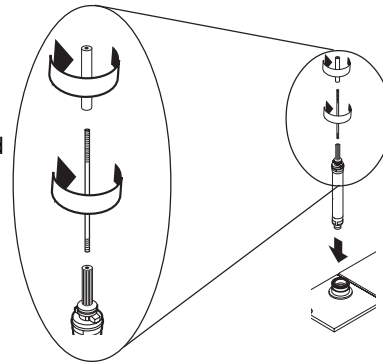
- Remove the plaster shields from the hot and cold valves.
- Position the handle over the valve stem with the lever in the desired "off" position.
- Holding the lever in place, use your other hand to turn the "bell" and screw it down over the mounting plate.



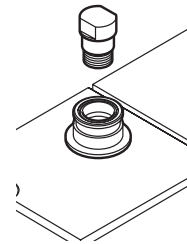
### *Assemble the Diverter and Spout*

#### *Interaktiv and Swing*

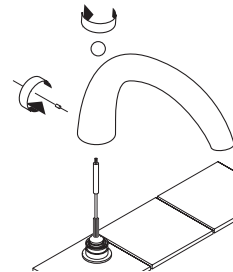
- Screw the shorter threaded end of the threaded rod into the diverter. Slide the rod trim onto the rod and
- screw into place so that a few threads protrude from the top.



- Remove the plaster shield from the spout tee. Remove the brass plug from the tee.
- Press the diverter assembly firmly into the spout tee until it is fully seated.

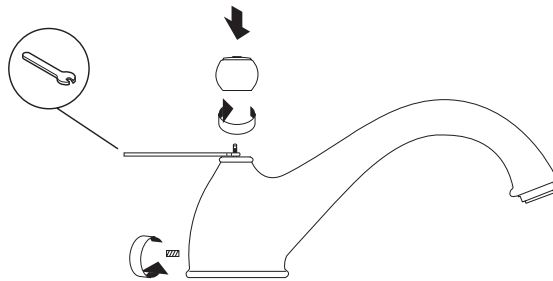
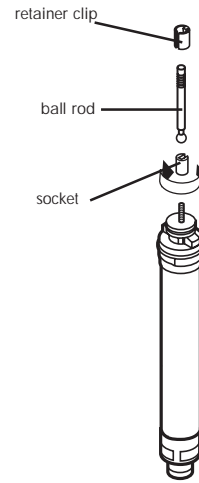


- Firmly press the spout over the tee and diverter. Tighten the set screw with the included 3mm allen wrench.
- CAUTION: do not overtighten the set screw or the o-rings on the diverter will deform, which will cause a leak.
- Install the diverter knob.



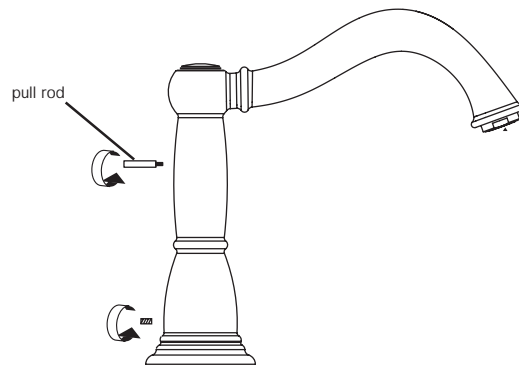
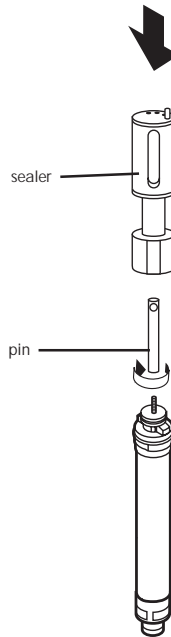
### *Limbo*

- Screw the socket onto the diverter.
- Insert the ball rod into the socket.
- Press the white plastic retainer clip over the ball rod. Press into place over the socket.
- Remove the plaster shield from the spout tee. Remove the brass plug from the tee.
- Press the diverter assembly firmly into the spout tee until it is fully seated.
- Firmly press the spout over the tee and diverter. Tighten the set screw with the included 3 mm allen wrench.
- CAUTION: do not overtighten the set screw or the o-rings on the diverter will deform, which will cause a leak.
- Use the included wrench to hold the threaded rod steady. It may be necessary to use a needle-nosed plier to pull up on the threaded rod to expose the wrench flats. Screw on the pull knob.



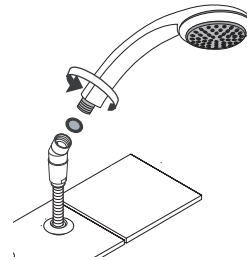
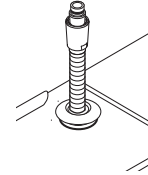
## Tango

- Thread the pin onto the diverter.
- Press the sealer firmly into place. The hole in the pin should be clearly visible through the slot in the sealer.
- Remove the plaster shield from the spout tee. Remove the brass plug from the tee.
- Press the diverter assembly firmly into the spout tee until it is fully seated. Turn the sealer so that the slot faces the rear of the spout.
- Firmly press the spout over the tee and diverter. Tighten the set screw with the included 3 mm allen wrench.
- CAUTION: do not overtighten the set screw or the o-rings on the diverter will deform, which will cause a leak.
- Thread the pull rod into place. The threaded end of the pull rod must go into the hole in the pin.



***Install the Handshower Holder Escutcheon and Handshower***

- Remove the plaster shield from the handshower holder. Pull out on the handshower hose.
- Screw the handshower holder escutcheon into place. Install the elbow.
- Place a washer in the elbow. Screw the handshower into the elbow. Lower into the holder.



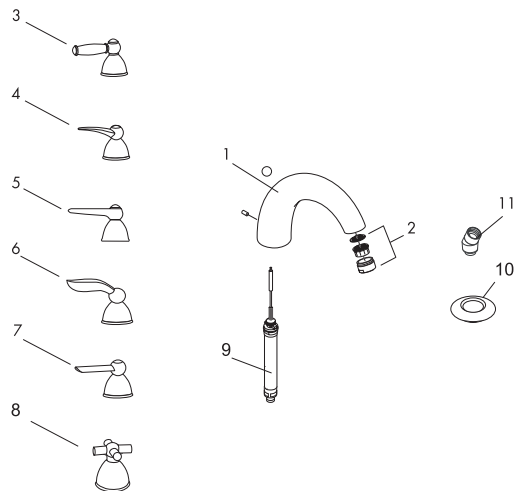
***User Instructions:***

- Turn the left handle to obtain hot water, the right handle to obtain cold water.
- To divert the water to the handshower, pull up on the diverter knob with the water running. The diverter will re-set to the spout position when the water is turned off.

## Troubleshooting

Problem	Possible Cause	Solution
water drips from spout for a few minutes when unit is turned off water drips from spout constantly when unit is turned off.	normal drainage of water from spout, not usually a problem valve cartridge is dirty or faulty	check aerator for debris, clean if necessary replace valve cartridge
water pools at base of spout	diverter not installed correctly spout set screw too tight	reinstall diverter, pushing it in firmly reinstall, taking care not to overtighten
water still comes from spout when water is diverted to handshower	diverter or diverter o-rings faulty diverter dirty or faulty	replace diverter remove and rinse diverter, replace if necessary

## Service Parts



- 1 spout
- 2 aerator
- 3 1901 handle
- 4 Monsoon handle
- 5 Metro handle
- 6 Solaris handle
- 7 Stratos handle
- 8 Interaktiv S handle
- 9 diverter
- 10 handshower holder escutcheon
- 11 handshower elbow



## ***Cleaning Recommendation for Hansgrohe Products***

Modern faucetry and shower products utilize a combination of materials to comply with the needs of the market with regard to design and functionality.

To avoid damage, it is necessary to use some caution when cleaning. Damage caused by improper treatment is not covered under the Hansgrohe warranty.

### ***Cleaning Materials for Faucets and Showers***

- To remove lime scale, use only products made specifically for that purpose. Always follow the manufacturer's instructions when using.
- Do not use cleaners that contain hydrochloric, formic, acetic, or phosphoric acids, as these will cause considerable damage to finishes and to plastic components.
- Never mix cleaning materials.
- Never use cleaners containing abrasives. Do not use abrasive cleaning cloths, pads, or sponges.

### ***Cleaning Procedures***

- Clean your faucets and shower products as and when required. Regular cleaning will prevent scale buildup and water spotting.
- Follow the label instructions. Do not allow any cleaner to remain on the product for longer than necessary.
- When using spray cleaners, spray first onto a sponge or cloth – do not spray directly onto the product.
- After cleaning, rinse thoroughly with clear water to remove any cleaner residue.

### ***Important***

- Soap and shampoo residue can also cause damage to the product. Rinse well with clean water after use.
- If the surface is already damaged, harsh cleaning materials will cause further damage.

## ***Limited Lifetime Consumer Warranty***

This product has been manufactured and tested to the highest quality standards by Hansgrohe, Inc. ("Hansgrohe"). This warranty is limited to Hansgrohe products which are purchased by a consumer in the United States after March 1, 1996, and installed in either the United States or Canada.

### ***WHO IS COVERED BY THE WARRANTY***

This warranty extends to the original consumer purchaser only.

### ***WHAT IS COVERED BY THE WARRANTY***

This warranty covers only your Hansgrohe manufactured product. Hansgrohe warrants this product against defects in material or workmanship as follows: Hansgrohe will repair at no charge for parts only or, at its option, replace any product or part of the product which proves defective because of improper workmanship and/or material, under normal installation, use, service and maintenance. If Hansgrohe is unable to provide a replacement and repair is not practical or cannot be timely made, Hansgrohe may elect to refund the purchase price in exchange for the return of the product.

### ***LENGTH OF WARRANTY***

Replacement or repaired parts of products will be covered for the term of this warranty as stated in the following two sentences. If you are a consumer who purchased the product for use primarily for personal, family, or household purposes, this warranty extends for as long as you own the product and the home in which the product is installed. If you purchased the product for use primarily for any other purpose, including, without limitation, a commercial purpose, this warranty extends only (i) for 1 year, with respect to Interaktiv and Retroaktiv products, and (ii) for 5 years, with respect to AXOR, ShowerPower and Pharo products.

### ***THIS WARRANTY DOES NOT COVER, AND HANSGROHE WILL NOT PAY FOR:***

- A. Conditions, malfunctions or damage not resulting from defects in material or workmanship.

- B. Conditions, malfunctions or damage resulting from (1) improper installation, improper maintenance, misuse, abuse, negligence, accident or alteration, or (2) the use of abrasive or caustic cleaning agents or "no rinse" cleaning products, or the use of the product in any manner contrary to the product instructions.
- C. Labor or other expenses for the disconnection or return of the product for warranty service, or for installation or reinstallation of the product.
- D. Accessories or related products not manufactured by Hansgrohe.

***TO OBTAIN WARRANTY SERVICE***

Contact your Hansgrohe retailer, or write to Technical Service at:

Hansgrohe Inc.  
1492 Bluegrass Lakes Parkway  
Alpharetta GA 30004

Or, call Hansgrohe toll-free at (800) 334-0455.

In requesting warranty service, you will need to provide

1. The sales receipt or other evidence of the date and place of purchase.
2. A description of the problem.
3. Delivery of the product or the defective part, postage prepaid and carefully packed and insured, to Hansgrohe Inc. 1492 Bluegrass Lakes Parkway, Alpharetta, Georgia 30004, Attention: Technical Service, if required by Hansgrohe.

When warranty service is completed, any repaired or replacement product or part will be returned to you postage prepaid.

***EXCLUSIONS AND LIMITATIONS***

***REPAIR OR REPLACEMENT (OR, IN LIMITED CIRCUMSTANCES, REFUND OF THE PURCHASE PRICE) AS PROVIDED UNDER THIS WARRANTY IS THE EXCLUSIVE REMEDY OF THE PURCHASER. HANSGROHE NEITHER ASSUMES NOR AUTHORIZES ANY PERSON TO CREATE FOR IT ANY OBLIGATION OR LIABILITY IN CONNECTION WITH THIS PRODUCT.***

***HANSGROHE SHALL NOT BE LIABLE TO PURCHASER OR ANY PERSON FOR ANY INCIDENTAL, SPECIAL, OR CONSEQUENTIAL DAMAGES, ARISING OUT OF BREACH OF THIS WARRANTY OR ANY IMPLIED WARRANTY (INCLUDING MERCHANTABILITY).***

Some States do not allow the exclusion or limitation of incidental or consequential damages, so the above limitation or exclusion may not apply to you.

This warranty gives you specific legal rights, and you may have other rights which vary from State to State.

You may be required by law to give us a reasonable opportunity to correct or cure any failure to comply before you can bring any action in court against us under the Magnuson-Moss Warranty Act.

***PRODUCT INSTRUCTIONS AND QUESTIONS***

Upon purchase or prior to installation, please carefully inspect your Hansgrohe product for any damage or visible defect. Prior to installing, always carefully study the enclosed instructions on the proper installation and the care and maintenance of the product. If you have questions at any time about the use, installation, or performance of your Hansgrohe product, or this warranty, please call or write to us at the toll-free number and address printed above.

*Hansgrohe Inc.*  
1490 Bluegrass Lakes Parkway  
Alpharetta GA 30004  
770 360 9880  
website: [www.hansgrohe-USA.com](http://www.hansgrohe-USA.com)