

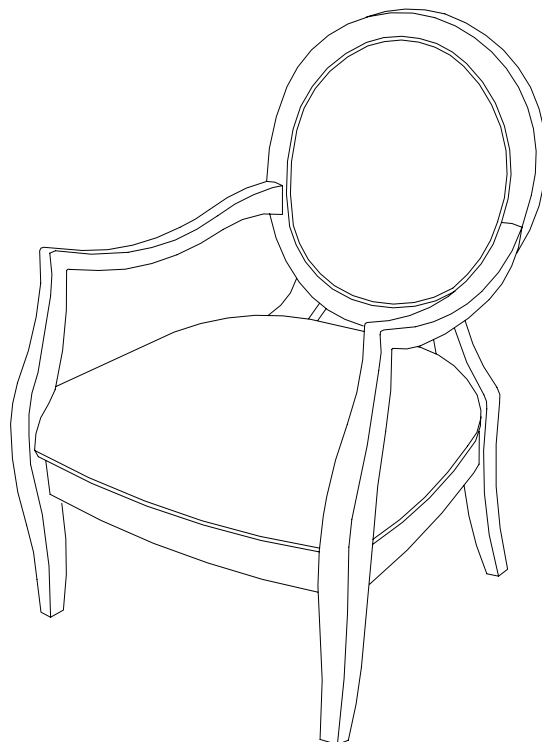


# **LINON HOME DÉCOR PRODUCTS INC.**

## **ASSEMBLY INSTRUCTIONS**

**MODEL: 36053BLK-01-KD**

**ZEBRA PRINT OCC CHAIR**



We are here to help!

We try to insure that your furniture is received in excellent condition. Our customer service representatives are ready to help you with quick and efficient service if a part is damaged, missing, if you have questions or require assembly assistance.

To avoid any inconvenience, please call Linon Customer Service prior to returning the item to the store.

Our office is open Monday –Friday 9:00 AM to 5:00 PM. Eastern Standard Time.

Toll free number: 1-800-262-1852 Customer Service

Fax: 1-516-699-1001

Telephone: 1-516-699-1000

E-mail: [consumersupport@linon.com](mailto:consumersupport@linon.com)

For care instruction for your newly purchased furniture, please visit our web site [www.linon.com](http://www.linon.com).

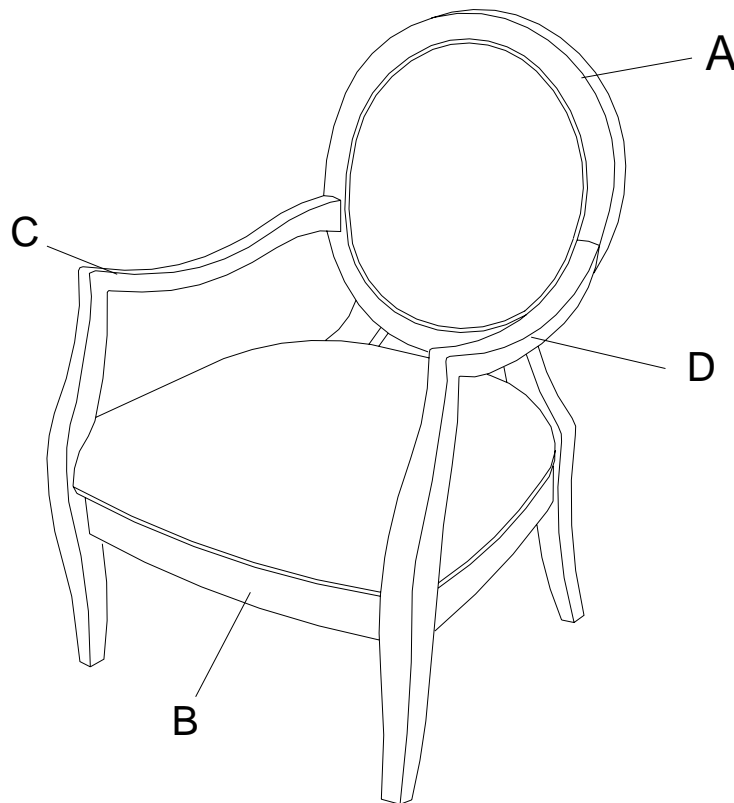


# LINON HOME DÉCOR PRODUCTS INC.

## ASSEMBLY INSTRUCTIONS

### PARTS LIST

A: CHAIR BACK    B: SEAT FRAME    C: LEFT FRAME    D: RIGHT FRAME



### HARDWARE LIST

PARTS	GRAPHICS	DESCRIPTION	SIZE	QUANTITY
E		SHORT BOLT	1-3/4"	3
F		LONG BOLT	3"	4
G		MIDDLE BOLT	2-1/4"	4
H		FLAT WASHER	1/4"	11
I		SPRING WASHER	1/4"	11
J		ALLEN WRENCH	1/4"	1
K		PLASTIC CAP	Ø20	2



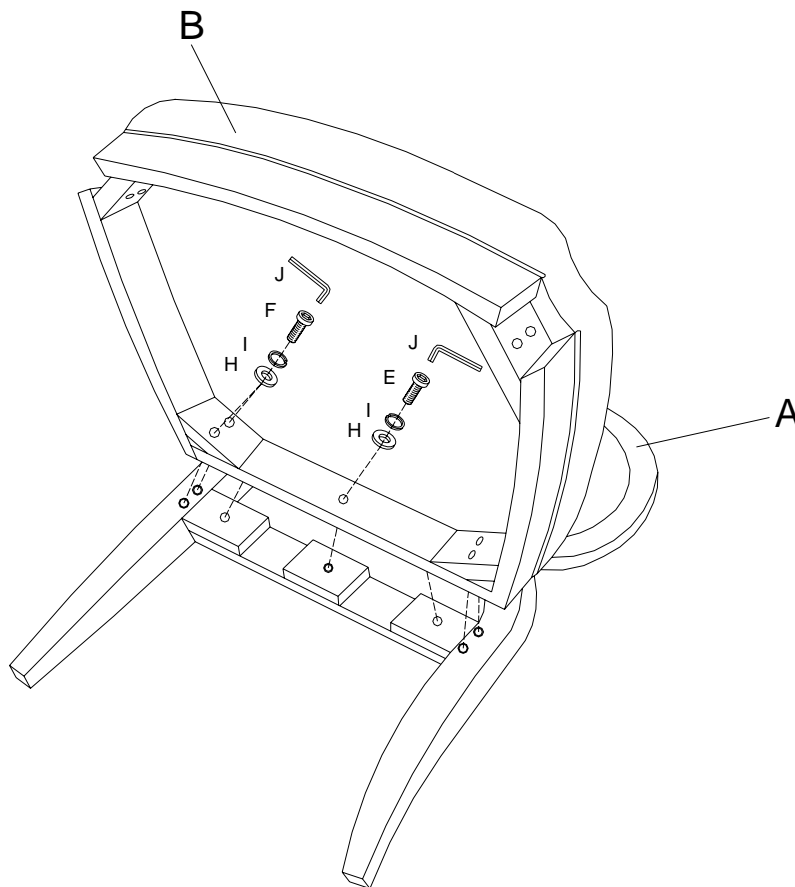
# LINON HOME DÉCOR PRODUCTS INC.

## ASSEMBLY INSTRUCTIONS

### PREPARATION:

SELECT A WORK SURFACE. WE RECOMMEND A TABLE TOP. PLEASE PROTECT IT VERY WELL, INCLUDING THE EDGES TO PREVENT ANY DAMAGES; YOU MAY USE A BLANKET AND THE CARDBOARD FROM THE CARTON BOX.

### STEP-1: CONNECT THE SEAT FRAME-B TO CHAIR BACK-A AS SHOWN IN FIGURE-1



**FIGURE-1**

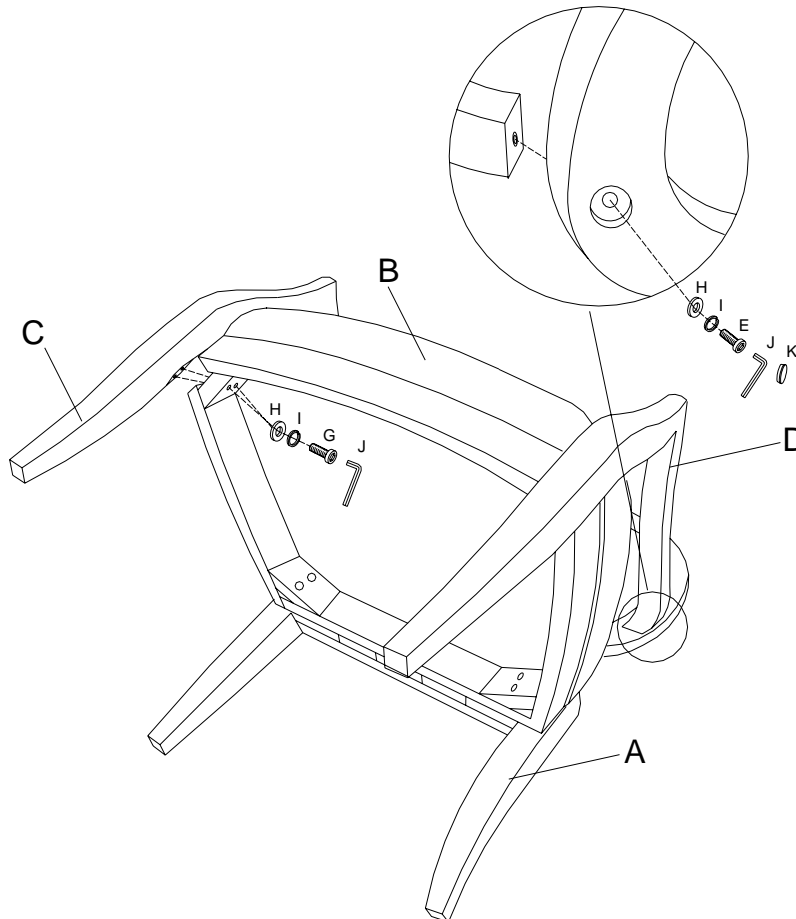
- 1.1 POSITION CHAIR BACK-A ON THE WORK SURFACE AS SHOWN IN FIGURE-1.
- 1.2 LOOK FOR TWO WOODEN DOWELS OUTSIDE SEAT FRAME-B; INSERT THEM INTO THE CORRESPONDING HOLES IN THE RAIL OF CHAIR BACK-A.
- 1.3 INSERT ONE SPRING WASHER-I, THEN ONE FLAT WASHER-H OVER ONE LONG BOLT-F; INSERT THE LONG BOLT-F THROUGH ANY OF THE FOUR HOLES IN THE CORNER OF THE SEAT FRAME-B; IF NECESSARY, MOVE THE LONG BOLT-F AROUND TO FIND THE HOLE IN THE BACK LEGS. TIGHTEN BY HAND.
- 1.4 REPEAT PROCEDURE 1.3 TO INSTALL THE REMAINING THREE SETS F+I+H.
- 1.5 REPEAT PROCEDURE 1.4 TO INSTALL ONE SHORT BOLTS-E WITH HARDWARE I+H TO SECURE SEAT FRAME -B TO CHAIR BACK-A.



# LINON HOME DÉCOR PRODUCTS INC.

## ASSEMBLY INSTRUCTIONS

### STEP-2: CONNECT THE LEFT FRAME-C AND RIGHT FRAME-D TO CHAIR BACK-A AND SEAT FRAME-B SHOWN IN FIGURE-2



**FIGURE-2**

- 2.1 POSITION THE ASSEMBLED UNIT ON WORK SURFACE AS SHOWN IN FIGURE-2.
- 2.2 CONNECT LEFT FRAME-C TO SEAT FRAME-B USING TWO MIDDLE BOLTS-G WITH TWO SPRING WASHERS-I, AND TWO FLAT WASHERS-H AS SHOWN IN FIGURE-2. TIGHTEN BY HAND.
- 2.3 INSERT ONE SPRING WASHER-I, ONE FLAT WASHER-H OVER ONE SHORT BOLT-E; INSERT THE SHORT BOLT-E THROUGH THE HOLES IN THE BACK OF CHAIR BACK; IF NECESSARY, MOVE THE SHORT BOLT-E AROUND TO FIND THE HOLE IN THE CHAIR BACK, FULLY TIGHTEN THE BOLTS USING ALLEN WRENCH-J.
- 2.4 REPEAT PROCEDURE 2.2 & 2.3 TO INSTALL TWO MIDDLE BOLTS-G WITH HARDWARE I+H AND ONE SHORT BOLT- E WITH HARDWARE I+H TO SECURE THE SIDE FRAME TO SEAT FRAME-B AND CHAIR BACK- A.
- 2.5 TURN THE CHAIR UPRIGHT, THEN INSERT TWO PLASTIC CAP-K INTO THE HOLES IN THE BACK OF CHAIR BACK.



# LINON HOME DÉCOR PRODUCTS INC.

## ASSEMBLY INSTRUCTIONS

### LINON LIMITED MANUFACTURER'S

### WARRANTY

This product is covered under our manufacturer's limited warranty (Linon Home Décor Products). This ensures that under this warranty the Linon item:

Will be free from defects in material and workmanship when purchased and that for a period of 30 days from date of purchase we will replace any missing part and for a period of six months from date of purchase we will replace any defects in the product that occur during normal use. At that point it will be at the option of Linon to replace the defective part or refer you back to the original purchase site.

The warranty does not cover any labor and or freight charges to or from the service center. It does not cover furniture used for commercial purposes, failures caused by improper care, unreasonable or abusive use, freeze damage or acts of God.

All purchase must be made in authorized dealerships during the normal course of business. Proof of purchase may be required.

### Service

For further information please contact our customer service department between the hours of 9:00 AM and 5:00 PM Eastern Standard Time. You can contact us at:

Linon Home Décor Products  
22 Jericho Turnpike  
Mineola, NY 11501

E-Mail: [consumersupport@linon.com](mailto:consumersupport@linon.com)

Tel: 516-699-1000

Fax: 516-699-1001

TOLL FREE: 1-800-262-1852