

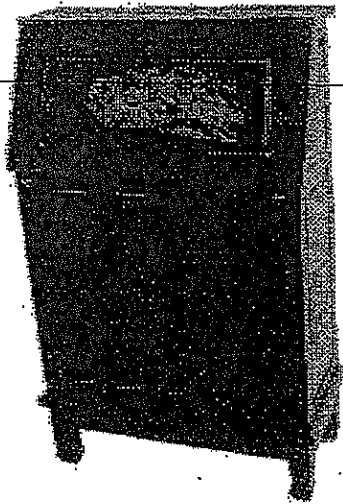


SOUTHERN ENTERPRISES, INC.

Relax... If you can follow a few easy,
step-by-step directions in order...
YOU CAN ASSEMBLE THIS ITEM

ASSEMBLY INSTRUCTION

HO0420 CARVED SECRETARY DESK



PARTS LIST		
NO.	DESCRIPTION	QTY
A	LEG	4
B	DESK	1
C	WASHER	8
D	SCREW	8
E	WRENCH	1

INSTRUCTIONS:

1. SET THE DESK(B) DOWN ON A SMOOTH SURFACE
2. ATTACH THE LEG(A) INTO THE CORNER OF THE DESK(B).
3. INSERT THE SCREW(D) WITH WASHER(C) THROUGH THE CORNER OF THE DESK(B) INTO THE LEG
4. USING THE WRENCH (E) TIGHTEN THE SCREW.
5. REPEAT FOR THE OTHER LEG.
6. SET THE DESK UPRIGHT.

