

MODEL: 50196TE  
**ASSEMBLY INSTRUCTIONS**  
READ AND SAVE THESE INSTRUCTIONS

READ INSTRUCTIONS ALL THE WAY THROUGH PRIOR TO ASSEMBLY.

THIS FOUNTAIN SHOULD TAKE APPROXIMATELY 5 MINUTES TO ASSEMBLE.

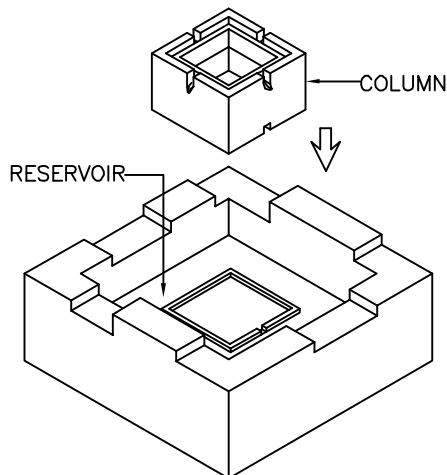
MAKE SURE ALL PARTS ARE FIRMLY TIGHTENED.

**UNPACK THE FOUNTAIN**

YOU SHOULD HAVE RECEIVED THE FOLLOWING PARTS: SOLAR PANEL, (2) REMOTE-CONTROL UNITS, RUBBER HOSE, COLUMN, RESERVOIR AND PUMP. TO PROTECT THE FINISH, PLACE ALL PARTS ON A SOFT SURFACE.

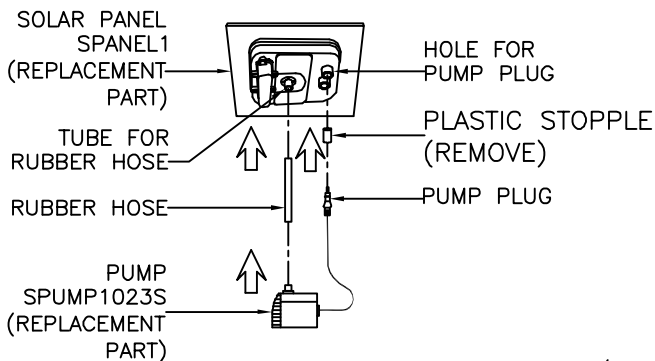
**FOUNTAIN ASSEMBLY**

**1. PLACE COLUMN INTO RESERVOIR, MAKE SURE TO LINE UP THE NOTCHES.**

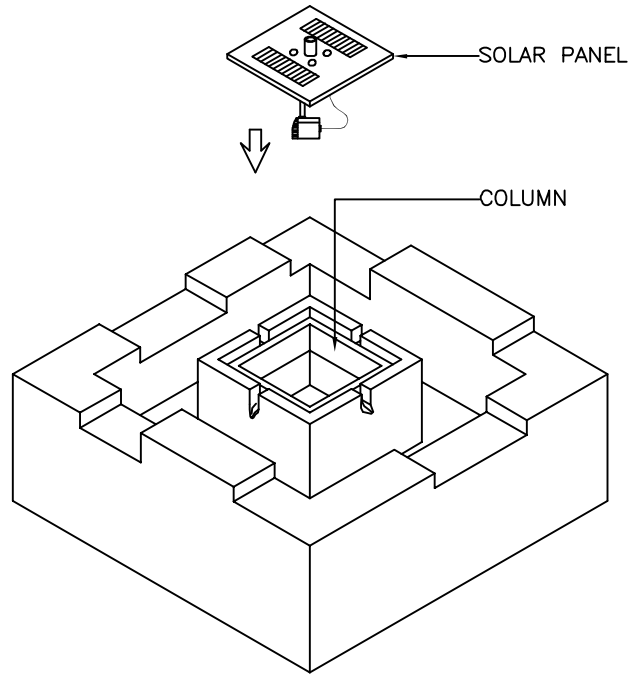


**2. ATTACH RUBBER HOSE TO THE TUBE FOR RUBBER HOSE AND ATTACH PUMP TO THE RUBBER HOSE.**

**3. REMOVE PLASTIC STOPPLE FROM THE HOLE FOR PUMP PLUG, THEN TWIST PUMP PLUG SLIGHTLY AND PUSHING IT INTO THE HOLE FOR PUMP PLUG, MAKE SURE THE SEALING RING IS FULLY IN GROOVE.**

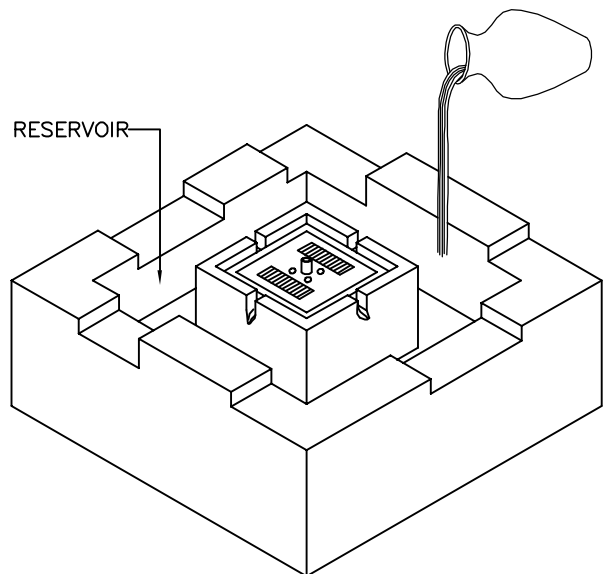


**4. PLACE SOLAR PANEL WITH PUMP INTO COLUMN.**



**5. FILL RESERVOIR WITH 4.6 GALLONS OF WATER TO COMPLETELY SUBMERSE THE PUMP.**

**NOTE:** DISTILLED WATER IS RECOMMENDED TO REDUCE MINERAL DEPOSITS AND BACTERIA BUILD-UP.



MODEL: 50196TE  
**ASSEMBLY INSTRUCTIONS**  
READ AND SAVE THESE INSTRUCTIONS

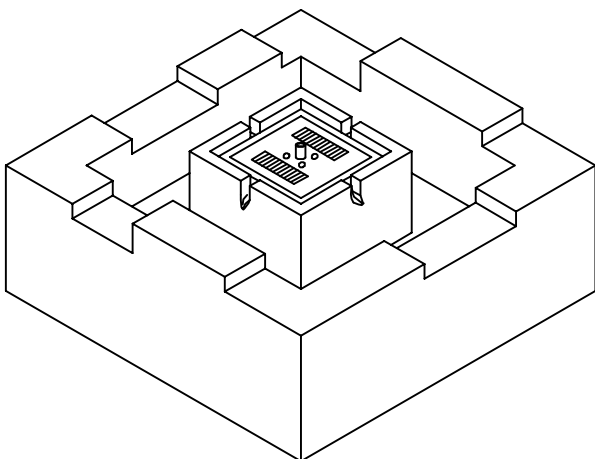
FOUNTAIN ASSEMBLY

**6.** TURN ON THIS FOUNTAIN, YOUR NEW FOUNTAIN IS READY FOR USE.

\* PRESS "A" TO TURN ON/OFF THE PUMP AND THE LED LIGHTS. (NOTE: LED LIGHTS ONLY WORK AT NIGHT)

\*\* PRESS "B" TO ADJUST PUMP TO ACHIEVE VARIABLE WATER FLOW.

\*\*\* REMOTE-CONTROL UNIT EFFECTIVE DISTANCE: 32 FEET.



REMOTE-CONTROL UNIT  
SOLARREMOTE1  
(REPLACEMENT PART)



AVAILABLE PARTS ARE:  
SPUMP1023S (PUMP)  
SPANEL1 (SOLAR PANEL)  
BATTERY3V (BATTERY PACK)  
SOLARREMOTE1 (REMOTE-CONTROL UNIT)

TROUBLE SHOOTING:

1. IF YOUR FOUNTAIN DOES NOT WORK, CHECK SOLAR PANEL IS IN CORRECT POSITION, RECEIVING SUNLIGHT AND NOT IN SHADOW.
2. CHECK CONNECTIONS BETWEEN THE PUMP/LED AND THE SOLAR PANEL.
3. CHECK WATER LEVEL AND MAKE SURE THE PUMP IS SUBMERGED.
4. IF THE FOUNTAIN STILL DOES NOT WORK, PLEASE CONTACT YOUR DISTRIBUTOR OR PLACE OF PURCHASE.

SPLASHING DISCLAIMER:

SPLASHING MAY OCCUR WHEN FOUNTAIN IS INITIALLY TURNED ON. PROTECT SURROUNDING SURFACES AS NEEDED.

IMPORTANT PUMP INFORMATION:

PUMP MUST BE FULLY SUBMERSED IN WATER WHILE OPERATING.

WATER:

TO REDUCE MINERAL DEPOSITS AND BACTERIA BUILD UP THE USE OF DISTILLED WATER IS RECOMMENDED.

IMPORTANT NOTES:

1. SOLAR PUMP WILL KEEP RUNNING FOR 3 HOURS EACH TIME (3H TIMER) AFTER YOU TURN ON IT.
2. THE LED LIGHTS WILL TURN ON AUTOMATICALLY EVERY NIGHT WHEN THIS FOUNTAIN IS TURNED ON.
3. ALTHOUGH THERE MAY BE SOME INITIAL CHARGE IN BATTERY, WE RECOMMEND FULLY CHARGING IT BEFORE FIRST USE. TURN OFF THE SOLAR PUMP AND LEAVE THE FOUNTAIN IN GOOD SUNLIGHT FOR 6 HOURS TO ENSURE THE BATTERY PACK IS FULLY CHARGED.
4. TO GET BEST PERFORMANCE FROM THE SOLAR PANEL IN THE SUNSHINE, PLEASE MAKE SURE THAT YOU PERIODICALLY CLEAN THE TOP SURFACE OF THE SOLAR PANEL (DO NOT USE A CHEMICAL SOLVENT).

WARNING:

\* ONCE A WEEK INSPECT FOUNTAIN, FLOOR AND ADJACENT WALL FOR MOISTURE BUILD-UP AND CLEAN AS NECESSARY. THIS IS ESPECIALLY IMPORTANT FOR HUMID ENVIRONMENTS.

\*\* THIS FOUNTAIN IS RATED FOR OUTDOOR USE.

\*\*\* MOVE YOUR FOUNTAIN INTO YOUR ROOM IN FREEZING DAYS TO PROTECT THE FOUNTAIN.

\*\*\*\* IF YOU DO NOT WANT TO USE THIS FOUNTAIN FOR LONG TIME, PLEASE UNPLUG THE PUMP PLUG FROM BOTTOM OF SOLAR PANEL.

PLEASE SEE NEXT PAGE FOR BATTERY PACK REPLACEMENT.

MODEL: 50196TE  
**ASSEMBLY INSTRUCTIONS**  
READ AND SAVE THESE INSTRUCTIONS

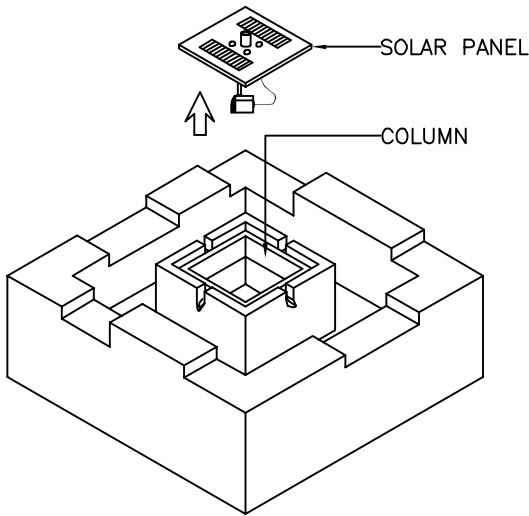
**BATTERY PACK INFORMATION:**

\* RECHARGABLE BATTERY PACK BECOME LESS EFFICIENT WITH REPEATED CHARGE AND DISCHARGE CYCLES, THE CAPACITY OF THE BATTERY PACK MAY REDUCE OVER TIME. IF YOU FIND THAT THE BATTERY PACK APPEAR LESS EFFICIENT, TRY TO BOOST CHARGE IT. TO DO THIS, LEAVE OFF THIS FOUNTAIN FOR 2~3 DAYS IN SUNNY DAYS TO ALLOW THE MAXIMUM CHARGE TO THE BATTERY PACK. WE RECOMMEND THAT YOU DO THIS OCCASIONALLY TO HELP PROLONG THE LIFE OF BATTERY PACK. IF YOUR BATTERY PACK STILL DOES NOT WORK WELL AFTER THIS BOOST CHARGE, YOU SHOULD REPLACE THE BATTERY PACK AS BELOW.

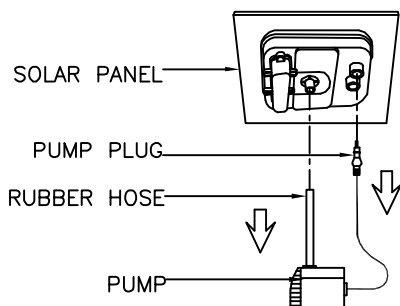
\*\* AFTER THE BATTERY PACK USED FOR 12~18 MONTHS, IT MAY HAVE REACHED IT'S SERVICE LIFE, YOU SHOULD REPLACE THE BATTERY PACK.

**BATTERY PACK REPLACEMENT INSTRUCTIONS:**

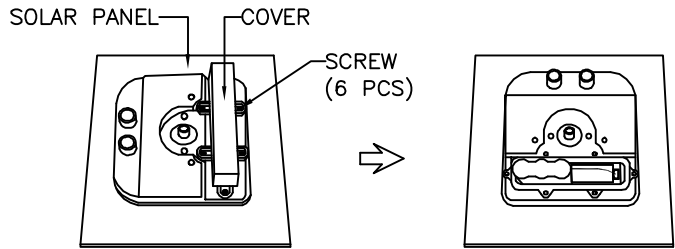
1. LIFT SOLAR PANEL WITH PUMP FROM COLUMN.



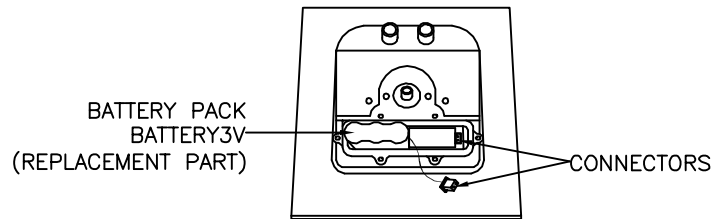
2. REMOVE RUBBER HOSE AND PUMP PLUG FROM SOLAR PANEL AS SHOWN.



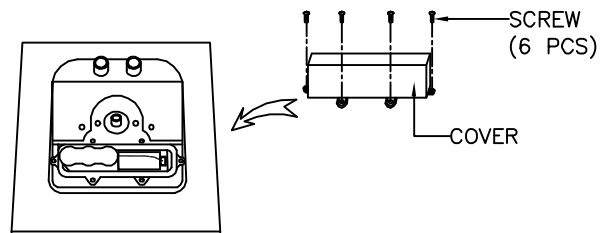
3. REMOVE COVER FROM SOLAR PANEL BY UNSCREWING (6) SCREWS.



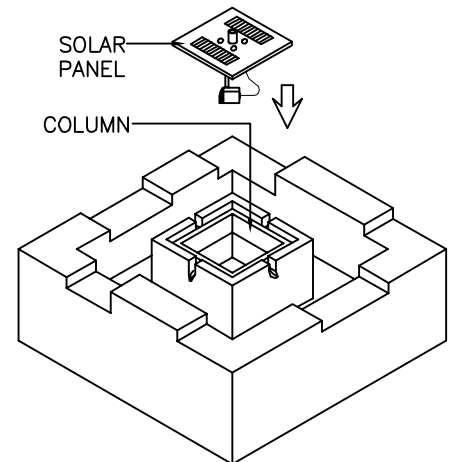
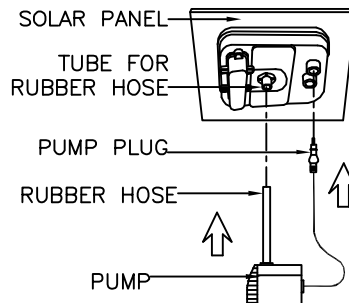
4. DISCONNECT THE CONNECTORS, THEN REPLACE THE OLD BATTERY PACK WITH A NEW BATTERY PACK AND JOIN THE CONNECTORS TOGETHER.



5. SECURE THE COVER TO SOLAR PANEL WITH THE (6) SCREWS REMOVED ABOVE.



6. ATTACH RUBBER HOSE TO THE TUBE FOR RUBBER HOSE, THEN TWIST PUMP PLUG SLIGHTLY AND PUSHING IT INTO THE HOLE FOR PUMP PLUG, MAKE SURE THE SEALING RING IS FULLY IN GROOVE.



7. PLACE SOLAR PANEL WITH PUMP INTO COLUMN.

**AVAILABLE PARTS ARE:**  
 SPUMP1023S (PUMP)  
 SPANEL1 (SOLAR PANEL)  
 BATTERY3V (BATTERY PACK)  
 SOLARREMOTE1 (REMOTE-CONTROL UNIT)