

PRODUCT SPECIFICATIONS

OVERALL ASSEMBLED DIMENSIONS

HEIGHT: 36.1 CM (14-1/4") SQ: 17.8 CM (7"),

1 LIGHT: UL LISTED. 18 WATT, GU24 PLASTIC SOCKET. 18 WATT G24Q-2 BULB INCLUDED. PHOTOSENSOR INCLUDED.

ROOF: PAINTED ALUMINUM, 17.8 CM (7") SQ. x 3.2 CM (1-1/4") HEIGHT. SHAPED AS SHOWN.

GLASS SHADE: AMBER MARBLEIZED GLASS SHADE FOR ORB FINISH, WHITE MARBLEIZED GLASS SHADE FOR APW FINISH, 14.9 CM (5-7/8") SQ. x 18.7 CM (7-3/8") HEIGHT.

CUP: PAINTED ALUMINUM, 17.4 CM (6-7/8") DIA. x 3.2 CM (1-1/4") HEIGHT, SHAPED AS SHOWN.

POST MOUNT: PAINTED ALUMINUM, 8.7 CM (3-7/16") DIA. x 8.6 CM (3-7/16") HEIGHT, SHAPED AS SHOWN.

SUPPLY WIRE: UL LISTED. 18 AWG, 105°C, MUST EXTEND A MINIMUM OF 15.2 (6") PAST CENTER OF POST MOUNT, BLACK/WHITE COLOR. WIRES MUST BE LEAD FREE.

LABELS: UL AND CSA OR CUL, MANUFACTURING DATE, MODEL # AND COUNTRY OF ORIGIN LABELS PROVIDED NEAR COVER. RELAMPING LABEL FOR 18 WATT MAX. TYPE "G24Q-2" BULB PROVIDED ON SOCKET.

PACKAGING AND SHIPPING DETAILS

THE ITEM IS DISASSEMBLED FOR SHIPPING AS SHOWN. EACH PART IS SECURED SO THEY CAN NOT MOVE DURING SHIPPING, A SMALL BAG OF SILICA IS INCLUDED.

HARDWARE PACK CONSISTS OF (3) MOUNTING SCREWS AND (3) WIRE CONNECTORS. ALL PARTS SHOULD BE SECURED SO THEY CAN NOT MOVE DURING SHIPPING.

THE CARTON IS MADE OF A DOUBLE WALL CORRUGATED CARDBOARD "A MA A". BROWN IN COLOR. THE INNER PACKING IS DIE-CUT CARDBOARD OR STYROFOAM SUFFICIENT TO PROTECT AND SECURE THE LANTERN AND MUST PASS THE SPECIFIED DROP TEST REQUIREMENTS.

EACH CARTON SHALL BE PRINTED WITH A LINE DRAWING AND THE KENROY HOME NAME AND LOGO, ENERGY STAR LOGO, MODEL NUMBER, SKU NUMBER AND FINISH, EACH CARTON SHALL BE PROVIDED A UPC LABEL. THE UPC BAR CODE AS FOLLOWS: ORB=053392069582.

OTHER DETAILS

ALL VISIBLE PARTS MUST MATCH IN FINISH UNLESS OTHERWISE SPECIFIED.

MODEL 70214ORB INSTALLATION INSTRUCTIONS ARE TO BE PACKED WITH LANTERN, AND BE PRINTED CLEARLY ON QUALITY PAPER.

ALL BAGS MUST BE LABELED WITH OFFICIAL "THIS BAG IS NOT A TOY" STATEMENT.

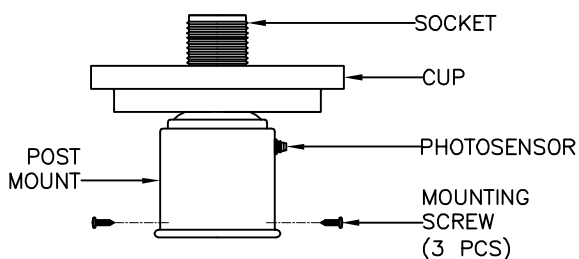
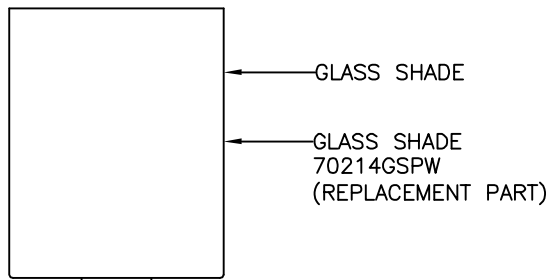
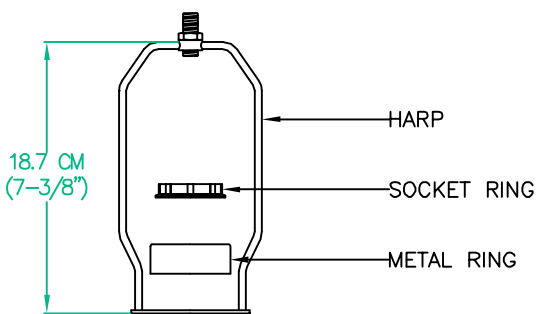
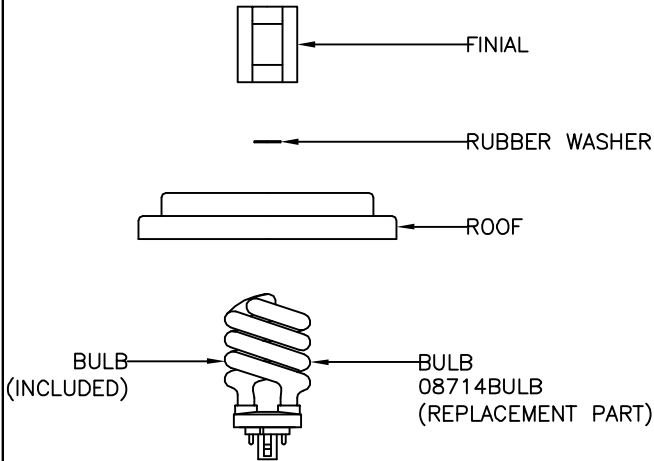
THIS ITEM MUST BE UL APPROVED FOR WET LOCATION.

DIMS OF BOX: 51 CM (20-1/16") LENGTH x 24 CM (9-7/16") WIDTH x 26 CM (10-1/4") HEIGHT.

NET WEIGHT: 6.6 LBS. GROSS WEIGHT: 8.14 LBS.

ASSEMBLY TIME: 15 MINUTES.

THE UL NUMBER IS E159469.



AVAILABLE PARTS ARE:
70214GSPW (GLASS SHADE)
08714BULB (BULB)

**KENROY
HOME**

11660 CENTRAL PARKWAY
JACKSONVILLE, FL. 32224
PHONE: 904-642-4340
FAX: 904-642-4150

THIS DOCUMENT AND THE INFORMATION THAT IT DISCLOSES IS THE EXCLUSIVE PROPERTY OF KENROY HOME. ANY REPRODUCTION OR USE OF THIS DRAWING IN PART OR IN WHOLE, WITHOUT THE EXPRESS CONSENT OF THE PROPRIETOR IS PROHIBITED. © 2007 KENROY HOME.

DATE: 6/20/2007

SCALE: NONE

DRAWN BY: JAMES

REFERENCE: PLATEAU 1LT. POST LANTERN

APPROVAL:

REVISION DATE:
11/21/07 add sensor

REVISION DATE:
5/15/08 add parts NO.

REVISION DATE:

REVISION DATE:

MODEL #:

70214

FINISH: ORB

PAGE: 1 OF: 1