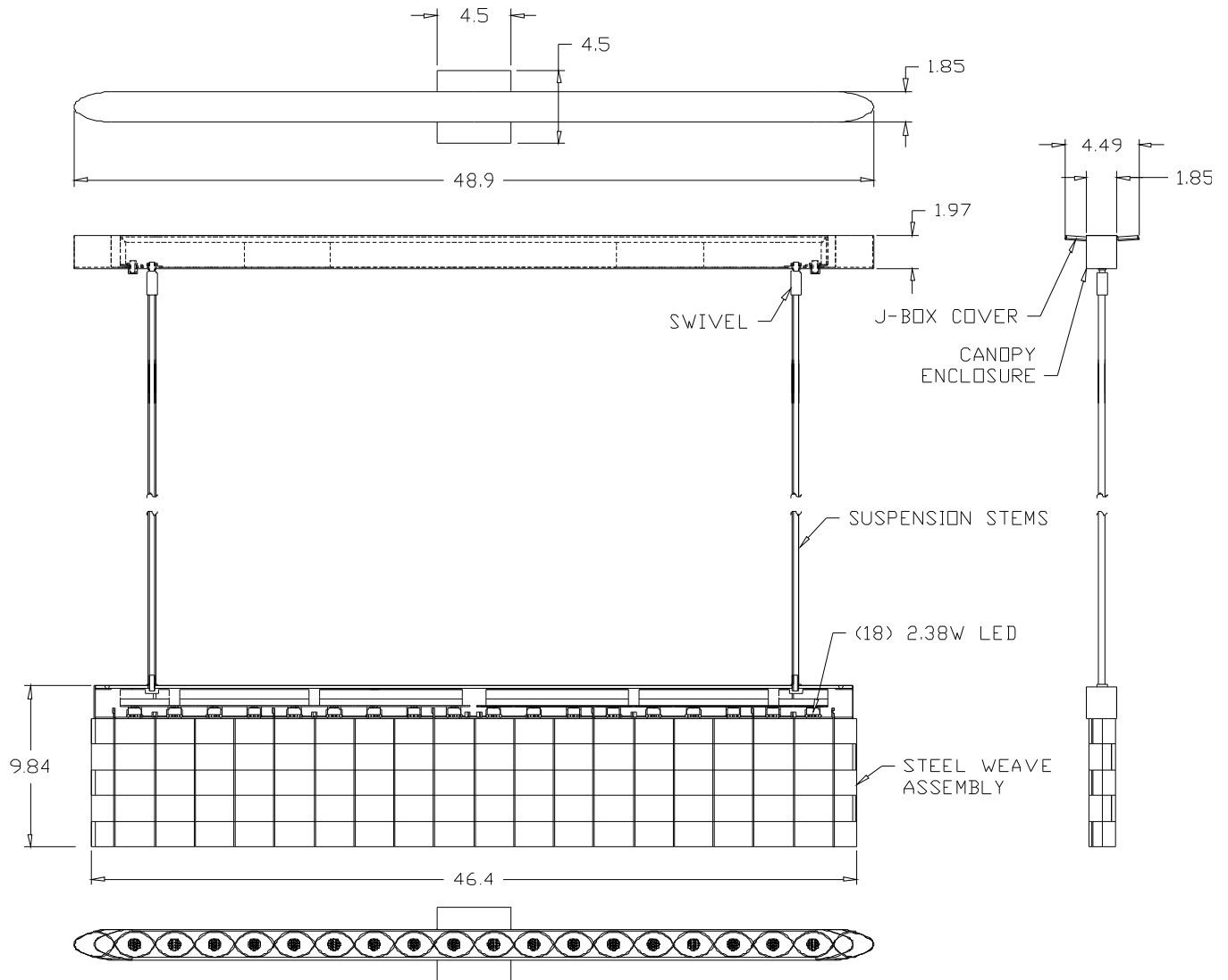


LED METAL WEAVE PENDANT



CONSTRUCTION: Satin nickel polished steel weave.

ELECTRICAL: Includes 18- 2.38W LED's, 3000K. Total fixture watts: 43.
120/277V electronic dimmable driver standard. Consult factory for dimmer specifications.
UL Approved for damp location use. Internal honeycomb louvers to enhance visual comfort

FINISHES: Satin Nickel

MOUNTING: Mounts to octagon junction box or 4x4 junction box with round plaster adapter. Feed point
May be offset from fixture center. Supplied with 2 sets of 4", 8", 12" and 24" stems for flexible
mounting heights.