

### K 19



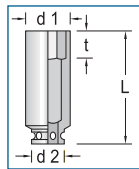
Code	No.	Ø <sup>AF</sup>	L	d <sub>1</sub>	d <sub>2</sub>	t	⚙️	📦
6166990	<b>K 19 3/8AF</b>	3/8	38	16.0	25	4.0	79	1
6162300	<b>K 19 7/16AF</b>	7/16	38	18.0	25	6.0	79	1
6162650	<b>K 19 1/2AF</b>	1/2	38	20.0	25	6.0	78	1
6163030	<b>K 19 9/16AF</b>	9/16	38	22.0	25	7.0	80	1
6163460	<b>K 19 5/8AF</b>	5/8	38	25.0	25	8.0	121	1
6163700	<b>K 19 11/16AF</b>	11/16	38	25.0	25	9.0	121	1
6163970	<b>K 19 3/4AF</b>	3/4	38	27.5	30	9.5	115	1
6168420	<b>K 19 13/16AF</b>	13/16	38	30.0	30	11.0	131	1
6169820	<b>K 19 7/8AF</b>	7/8	38	32.0	30	13.0	141	1
6164190	<b>K 19 15/16AF</b>	15/16	38	35.0	30	13.0	156	1
6169900	<b>K 19 1AF</b>	1	38	35.0	30	13.0	169	1
6164350	<b>K 19 1.1/16AF</b>	1.1/16	50	38.0	30	13.0	173	1
6164510	<b>K 19 1.1/8AF</b>	1.1/8	40	38.0	30	16.5	180	1
6165240	<b>K 19 1.1/4AF</b>	1.1/4	40	44.0	35	17.0	284	1
6165320	<b>K 19 1.5/16AF</b>	1.5/16	43	45.0	35	19.0	296	1



### K 19 L

#### IMPACT SOCKET 1/2" hexagon, long pattern

- ✔ Suitable for all standard electric and air tools
- ✔ Square drive as per DIN 3121 - G 12.5, ISO 1174
- ✔ GEDORE special steel, manganese-phosphated



Code	No.	Ømm	L	d <sub>1</sub>	d <sub>2</sub>	t	⚙️	📦
6163110	<b>K 19 L 8</b>	8	77	15.3	25	12	124	5
6163380	<b>K 19 L 10</b>	10	77	17.8	25	12	140	10
6163540	<b>K 19 L 13</b>	13	77	21.5	25	13	158	10
6163620	<b>K 19 L 14</b>	14	77	22.8	25	13	171	5
6197790	<b>K 19 L 16</b>	16	77	24.0	30	14	208	5
6163890	<b>K 19 L 17</b>	17	80	26.5	30	15	230	10
6197870	<b>K 19 L 18</b>	18	82	27.8	30	15	255	5
6164000	<b>K 19 L 19</b>	19	82	29.0	30	17	265	10
6162730	<b>K 19 L 21</b>	21	82	31.5	30	17	306	5
6164270	<b>K 19 L 22</b>	22	82	32.8	30	19	318	10
6199810	<b>K 19 L 23</b>	23	82	34.0	30	19	328	1
6164430	<b>K 19 L 24</b>	24	82	35.3	30	21	358	10
6164780	<b>K 19 L 27</b>	27	82	39.0	30	22	396	5

Quantities in packs may vary.

### K 19 LD

#### IMPACT SOCKET 1/2" hexagon, long pattern, for cars

- ✔ Suitable for all standard electric and air tools
- ✔ Square drive as per DIN 3121 - G 12.5, ISO 1174
- ✔ GEDORE special steel, gun-metal finish

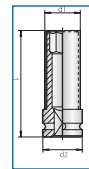


Code	No.	Ømm	L	d <sub>1</sub>	d <sub>2</sub>	t	⚙️	📦
6149120	<b>K 19 LD 17</b>	17	78	25	30	9.0	238	1
6149200	<b>K 19 LD 19</b>	19	78	27	30	9.5	274	1

### K 19 LS

#### IMPACT SOCKET 1/2" WITH PROTECTIVE SLEEVE hexagon, long pattern

- ✔ Square drive as per DIN 3121 - G 12.5, ISO 1174
- ✔ For racing wheels, with a plastic insert to protect the wheel nuts
- ✔ Thin-walled to protect the alloy wheels
- ✔ GEDORE special steel, manganese-phosphated

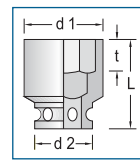


Code	No.	Ømm	RAL	Colour	L	d <sub>1</sub>	d <sub>2</sub>	t	⚙️	📦
2178214	<b>K 19 LS 17</b>	17	5017	Traffic blue	81	27.0	30	15	200	1
2178222	<b>K 19 LS 19</b>	19	6024	Traffic green	83	29.0	30	17	210	1
2178230	<b>K 19 LS 21</b>	21	3020	Traffic red	83	30.5	30	17	230	1
2178249	<b>K 19 LS 22</b>	22	1023	Traffic yellow	83	32.3	30	19	260	1

### KR 19

#### IMPACT SOCKET 1/2" hexagon, for cars

- ✔ Suitable for all standard electric and air tools
- ✔ Square drive as per DIN 3121 - G 12.5, ISO 1174
- ✔ GEDORE special steel, gun-metal finish



Code	No.	Ømm	L	d <sub>1</sub>	d <sub>2</sub>	t	⚙️	📦
6162490	<b>KR 19 17</b>	17	45	30	30	11	174	1
6162570	<b>KR 19 19</b>	19	45	33	30	13	186	1