

SANDING AND POLISHING PADS



INGERSOLL-RAND SANDING AND POLISHING PADS

Whatever your surface preparation needs happen to be, we offer a full range of sanding, backing, and polishing pads. Genuine Ingersoll-Rand pads are specifically engineered to work at the tolerances of our powerful tools, ensuring you get the best finishes possible.

SANDING AND POLISHING PADS

Firm Pads



310-825-6

Part Number	Description	For Use With
Firm Pads		
310-825-6	6" Firm pad for medium to heavy stock removal, cloth-backed, dual action backing pad, standard-duty	310, 311A

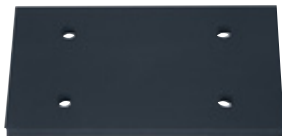
Vinyl Pads



311-825-6

Part Number	Description	For Use With
Vinyl Pads		
311-825-6	6" Vinyl pad, standard-duty	310, 311
311A-825-6	6" Vinyl pad, dual action backing pad, standard-duty	310, 311, 311A

Straight Line Pads



312-225

Part Number	Description	For Use With
Straight Line Pads		
312-225	3-2/3" x 6-3/4" Straight line pad	312, 312A
315-39	Straight line sanding pad	315

Backing Pads



313A-825-7



317A-825

Part Number	Description	For Use With
Backing Pads		
313A-825-7	7" Rigid backing pad, standard-duty	313, 313A, 314, 314A, 318, 318A, 319, & 319A
317A-825	3" & 5" backing pads	317, 317A

Pad Nut



313-226

Part Number	Description	For Use With
Pad Nut		
313-226	Pad nut	Cyclone T & H and G2 Series grinders
313A-226	Pad nut	Cyclone T & H and G2 Series grinders

SANDING AND POLISHING PADS

Sanding and Polishing Pads



D94SK-228A

Part Number	Description	For Use With
Sanding and Polishing Pads		
D94SK-228A	6-1/2" Pad	328B
6135A	Polishing pad 8" diameter, 2" thick polyester foam	313, 313A, 314, 314A, 318, 318A, 319, & 319A

Soft Edge Pads



6123A

Part Number	Description	For Use With
Soft Edge Pads		
6123A	5" Soft edge for medium support, cloth-backed, dual action backing pad	310, 311A
6121A	6" Soft edge for medium support, cloth-backed, dual action backing pad	310, 311A

Firm Edge Pads



6122A

Part Number	Description	For Use With
Firm Edge Pads		
6122A	5" Firm edge for firm support, cloth-backed, dual action backing pad	310, 311A
6120A	6" Firm edge for firm support, cloth-backed, dual action backing pad, heavy-duty	310, 311A

Wool Polishing Bonnet



P500-850

Part Number	Description	For Use With
Wool Polishing Bonnet		
P500-850	7" Wool polishing bonnet	313, 313A, 314, 314A, 318, 318A, 319, & 319A

Flexible Backing Pad



6130A

Part Number	Description	For Use With
Flexible Backing Pad		
6130A	7" Flexible backing pad, heavy-duty	313, 313A, 314, 314A, 318, 318A, 319, & 319A

Sanding Pad Assembly



328A-826

Part Number	Description	For Use With
Sanding Pad Assembly		
328A-826	8" Sanding pad assembly, dual action backing pad, standard-duty	328B



Work

SANDING AND POLISHING PADS

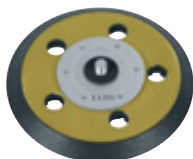
Non-vacuum Pads



49094-1

Part Number	Description	For Use With
Non-vacuum Pads		
49094-1	5" Non-vacuum vinyl pad	4151 & 4152 Series, Cyclone Standard, Cyclone Select, and CycloVAC
49879-1	6" Non-vacuum vinyl pad	4151 & 4152 Series, Cyclone Standard, Cyclone Select, and CycloVAC
49880-1	6" Non-vacuum duck pad	4151 & 4152 Series, Cyclone Standard, Cyclone Select, and CycloVAC

Vacuum Pads



49096-1

Part Number	Description	For Use With
Vacuum Pads		
49096-1	5" Vacuum petal pattern pad	4151 & 4152 Series, Cyclone Standard, Cyclone Select, and CycloVAC
49099-1	6" Vacuum petal pattern pad	4151 & 4152 Series, Cyclone Standard, Cyclone Select, and CycloVAC
49694	6" Vacuum hook and loop pattern pad	4151 & 4152 Series, Cyclone Standard, Cyclone Select, and CycloVAC

Sanding Pads



49095

Part Number	Description	For Use With
Sanding Pads		
49095	5" Sanding pad	4151 & 4152 Series, Cyclone Standard, Cyclone Select, and CycloVAC
49097	6" Sanding pad	4151 & 4152 Series, Cyclone Standard, Cyclone Select, and CycloVAC
49097-1	6" Sanding Pad	4151 & 4152 Series, Cyclone Standard, Cyclone Select, and CycloVAC

Duck Face Pad



49095-1

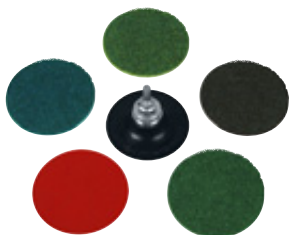
Part Number	Description	For Use With
Duck Face Pad		
49095-1	5" Duck face pad	4151 & 4152 Series, Cyclone Standard, Cyclone Select, and CycloVAC

SANDING AND POLISHING PACKS AND KITS

Pad and Abrasive Kits



LG1-K2



LG1-K3

Part Number	Description	For Use With
Pad and Abrasive Kits		
LG1-K2	Color-coded pad & abrasive kit; 2" with 1/4" shank	C Series, G1, 302A, 308A, 3102, & 3108 angle finishing tools
LG1-K3	Color-coded pad & abrasive kit; 3" with 1/4" shank	C Series, G1, 302A, 308A, 3102, & 3108 angle finishing tools

Sanding Pad Assembly (medium)



77A-AM825-5

Part Number	Description	For Use With
Sanding Pad Assembly (medium)		
77A-AM825-5	5" Sanding pad assembly (medium)	H Series, G2, ErgoPro Series, & Pro Series
77A-AM825-7	7" Sanding pad assembly (medium)	H Series, G2, ErgoPro Series, & Pro Series

Sanding Pad Assembly (firm)



77A-AM825-9

Part Number	Description	For Use With
Sanding Pad Assembly (firm)		
77A-AM825-9	9" Sanding pad assembly (firm)	H Series, G2, ErgoPro Series, & Pro Series



Work

SANDING BELTS

Sanding Belts (1/4" x 18")



LG1-SB418-60-10

Part Number	Description	Grit	For Use With
Sanding Belts (1/4" x 18")			
LG1-SB418-60-10	Pack of 10 sanding belts	60	CA120RS418, CA200RS418
LG1-SB418-80-10	Pack of 10 sanding belts	80	CA120RS418, CA200RS418
LG1-SB418-100-10	Pack of 10 sanding belts	100	CA120RS418, CA200RS418

Sanding Belts (1/2" x 12")



LG1-SB812-100-10

Part Number	Description	Grit	For Use With
Sanding Belts (1/2" x 12")			
LG1-SB812-60-10	Pack of 10 sanding belts	60	CA120RS812, CA200RS812
LG1-SB812-80-10	Pack of 10 sanding belts	80	CA120RS812, CA200RS812
LG1-SB812-100-10	Pack of 10 sanding belts	100	CA120RS812, CA200RS812

Sanding Belts (1/2" x 18")



LG1-SB818-60-10

Part Number	Description	Grit	For Use With
Sanding Belts (1/2" x 18")			
LG1-SB818-60-10	Pack of 10 sanding belts	60	CA120RS818, CA200RS818
LG1-SB818-80-10	Pack of 10 sanding belts	80	CA120RS818, CA200RS818
LG1-SB818-100-10	Pack of 10 sanding belts	100	CA120RS818, CA200RS818